

# UNICUS<sup>®</sup> 4i

All-In-One High Pressure Breathing Air System

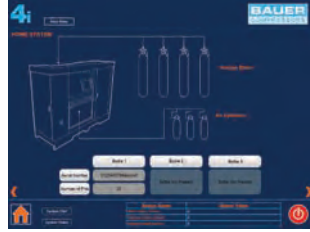
NEW  
TECHNOLOGY



## FEATURES

### SMART CONTROL SYSTEM

Our state-of-the-art control system with **12-inch HMI** touch-screen interface allows the operator to manage the entire system from the single-point touch screen.



- ▶ Intuitive, dynamic visual interface – reduces operator error, requires less training and allows the user to be in full control of the system, in one place, at all times
- ▶ Allows operator to set multiple-fill pressures from the touch screen
- ▶ Automatic cascading is controlled from the touch screen
- ▶ Access to all data logging functions including SCBA database for the optional RFID reading system

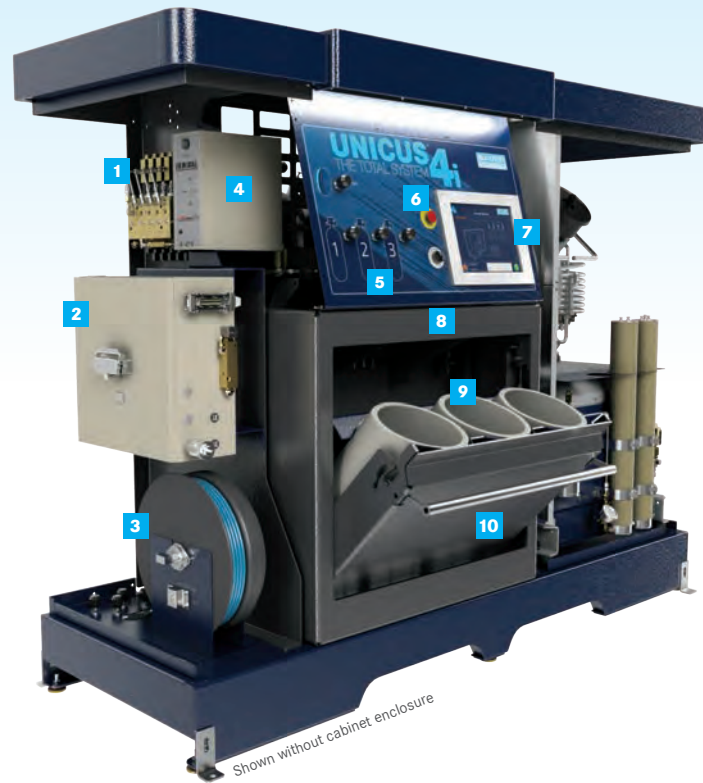


### STATE OF THE ART

BAUER's new **Gas-Tek™** gas sensors continuously monitor compressed air to ascertain "Grade E" breathing air in compliance with CGA G.7.1. The sensors are reliable, maintenance-free and easy to calibrate. Option to monitor CO, CO<sub>2</sub>, H<sub>2</sub>S, O<sub>2</sub>, NH<sub>3</sub>, CH<sub>4</sub> gases plus oil and moisture content.

## BENEFITS

- ▶ The integrated **12-inch HMI touch screen** allows operators to control the entire system from a central location with full visual interface of all system functions.
- ▶ The optional **BAUER Gas-Tek™ gas monitoring system** utilizes state-of-the-art gas sensor technology with real-time assessment of breathing air quality to assure safety. Trace elements of CO and other harmful gases in excess of preset limits will force the compressor to shut off and display an alarm on the HMI touch screen. The HMI will also automatically prompt a quarterly system calibration in accordance with NFPA guidelines.
- ▶ The optional **Lab On Locale 2™** facilitates real-time sampling of the compressed air and transmits the readings via internet uplink to an accredited third-party lab to satisfy quarterly air sample testing/reporting as prescribed by NFPA 1989.
- ▶ The optional **RFID Reader** (Data-Logging Interface) automatically reads and records data from the RFID equipped SCBA cylinders. Simply set the cylinder in one of three (3) fill positions and the scanner antenna will automatically provide the date/location/pressure/person of the last fill along with serial number and the bottle's total number of fills. **NFPA 1989 data collection made easy.**



- 1 SOLID STATE AUTO CASCADE SYSTEM
- 2 **BAUER GAS-TEK™** GAS MONITORING SYSTEM (OPTIONAL)
- 3 HOSE REEL BUILT TO ACCOMMODATE 100' OF HIGH PRESSURE BREATHING AIR HOSE (OPTIONAL)
- 4 **LAB ON LOCALE™** ACCREDITED REMOTE AIR TESTING (OPTIONAL)
- 5 ERGONOMIC SYSTEM-OPERATIONS PANEL
- 6 EMERGENCY STOP BUTTON
- 7 **12-INCH HMI TOUCH SCREEN CONTROL**
- 8 **RFID READER** TO LOG FILL-SEQUENCE AND DATA OF 3 SCBAs (OPTIONAL)
- 9 ERGONOMICALLY DESIGNED STAINLESS STEEL FILL ADAPTORS WITH INTEGRAL BLEED VALVE
- 10 THREE (3) POSITION CONTAINMENT FILL STATION: Independently tested and certified in accordance with the 2016 edition of NFPA1901 by a third party lab to contain the fragments of a ruptured 110 cubic ft 5500 psig scba

- 11 BAUER PURIFICATION SYSTEM & SECURUS ELECTRONIC PURIFICATION MONITORING SYSTEM
- 12 INTEGRATED AIR STORAGE SYSTEM: Two (2) ASME cylinders are standard; system is prepped for up to an optional two (2) additional cylinders for a unit compliment of four (4)

**COMPRESSOR COMPARTMENT:**  
Capable of accommodating from 13 to 26 scfm charge rate  
Insulated cabinet design for "Against the Wall Installation"

### OPTIONAL FEATURES

- ▶ BAUER Gas-Tek™ Gas Monitoring System
- ▶ Lab On Locale™ Accredited Remote Air Testing System
- ▶ RFID Reader: Reads and Records Data from the RFID Equipped Cylinders
- ▶ Hose Reel for 100' of High Pressure Breathing Air Hose

### SYSTEM FOOTPRINT

**DIMENSIONS L X W X H inches (mm)**  
▶ 101" x 78" x 38" (2565mm x 1981mm x 965mm)

**WEIGHT pounds (kg)**  
▶ 4350 - 4550 lb. (1973 - 2064 kg)  
\*Weights are based on a unit equipped with 4 ASMEs



## TECHNICAL DATA

Model	Charging Rate		Number of Stages	Motor		FAD	Purification Systems
	SCFM <sup>1</sup>	L/MIN		HP	KW		
<b>5000 psig (345 bar) - 6000 psig (414 bar)</b>							
UNICUS 4i	13 - 26.4	368 - 748	4 - 5	10 - 20	7.5 - 15	10.8 - 22	P2 Securus to P5 Securus

<sup>1</sup> Based on recharging an 80 cubic foot tank from 500 to 3000 psig.  
<sup>2</sup> Compressor capacity referenced to standard inlet conditions. Tolerance +/-5%

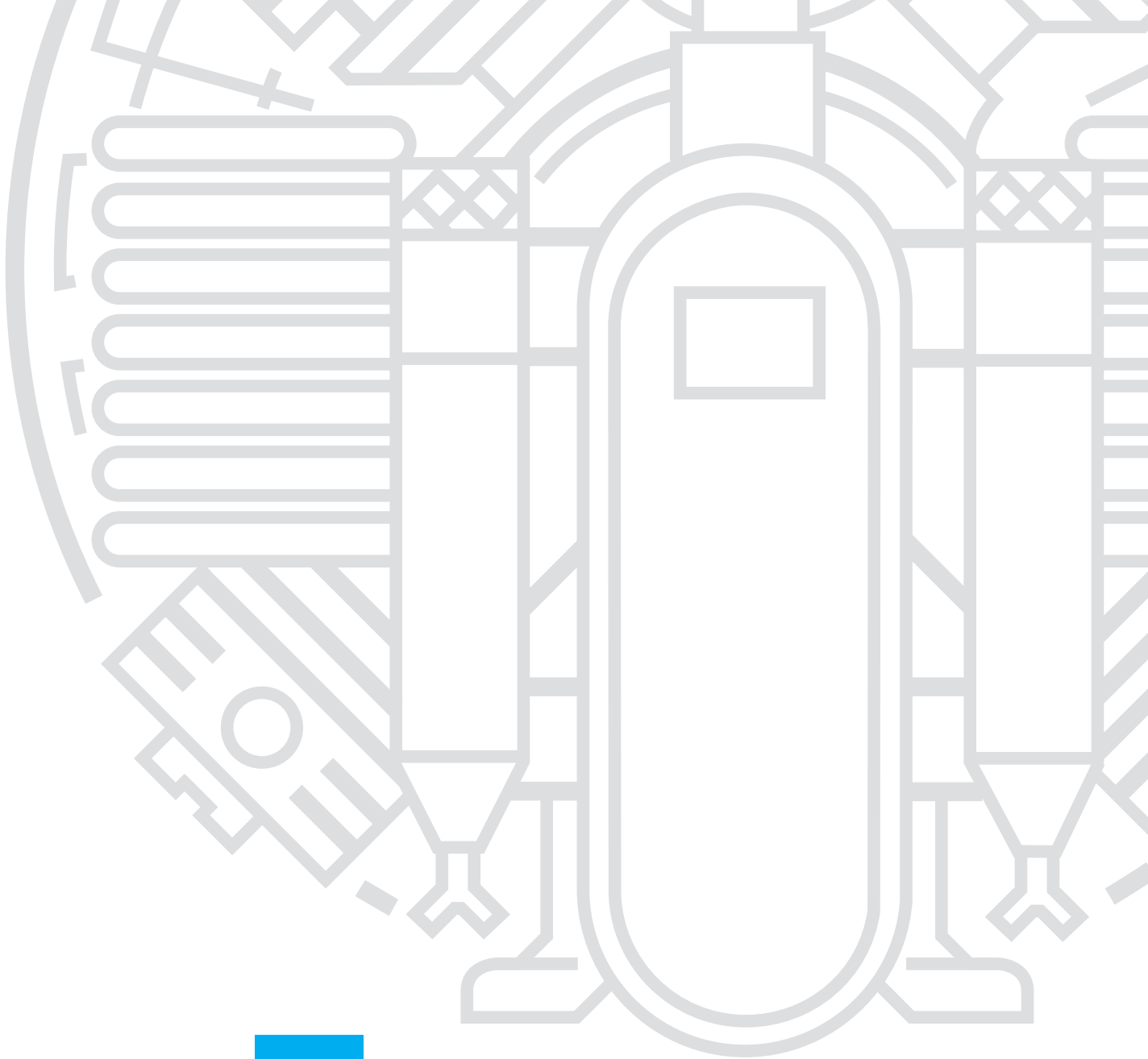
Model Range	Charging Rate	
	SCFM <sup>1</sup>	L/MIN
Unicus 4i - 13	13	368
Unicus 4i - 18	18	510
Unicus 4i - 20	21	595
Unicus 4i - 25	25.2	714
Unicus 4i - 26	26.4	748

## CUSTOMER SUPPORT

- GLOBAL SUPPORT
- SINGLE SOURCE RESPONSIBILITY
- LOW COST OF OWNERSHIP
- LIFECYCLE PERFORMANCE

FOR MORE INFORMATION PLEASE VISIT:  
[www.BauerCustomerSupport.com](http://www.BauerCustomerSupport.com)





**WATCH OUR NEW VIDEO AT: [www.BauerFire.com](http://www.BauerFire.com)**

**BAUER COMPRESSORS, INC.**  
1328 Azalea Garden Road  
Norfolk, VA 23502  
Tel. +1 (757) 855-6006  
Fax +1 (757) 857-1041  
[www.BauerComp.com](http://www.BauerComp.com)  
[www.BauerFire.com](http://www.BauerFire.com)



1007.03.16.1050SP  
Subject to technical changes